

Hampshire Avon Fish Counter

Knapp Mill, February 2026



Figure 1 – *Sunset across the floodplain after another heavy rainfall event. 16/02/26*

Summary

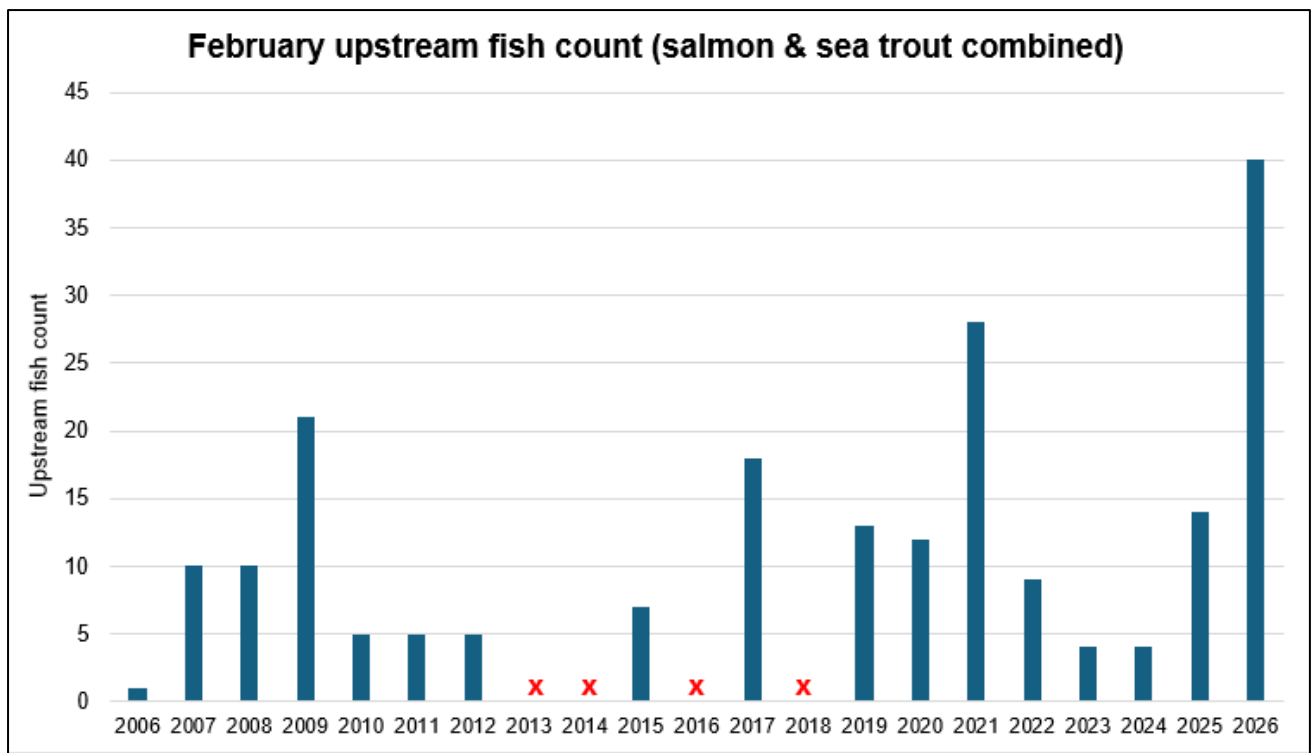
The counters operated without fault during February. Midway through the month, overhead cameras were installed above channels 19 and 20. 82% of migrating fish at the Great Weir used channel 20, and with good water clarity we have therefore been able to identify an improved proportion of fish. This should avoid the need to use historical data in our end of year estimate for February, as mentioned in last month's report.

Earlier in February, the Turbine House fish pass was affected by a build-up of flood debris within the opening which created a lot of turbulence over the counter. Other than generating noisy signals within the counter, the data remained usable, and a fish was detected at this time moving upstream past a small tree that was wedged across its path.

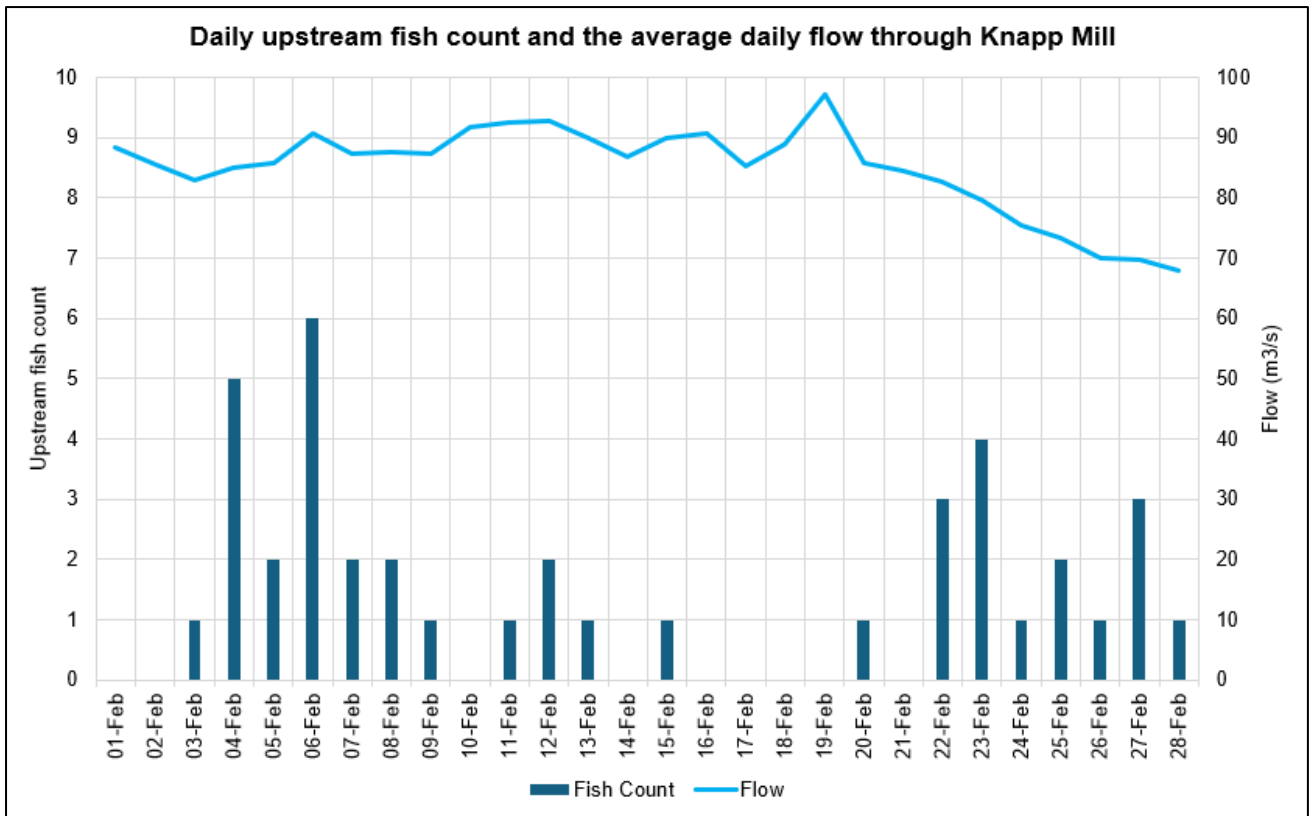
This year has seen the highest recorded total in February, with 40 fish heading upstream. This is 386% of the long-term average for this month. Of the fish identified to species level, there was a 2:1 ratio of salmon to sea trout.

11 days in February set new highest daily flow records (since 2006), with an average flow for the month similar to that in 2014, and significantly higher than the other years during this period. With the persistent rain, it wasn't until the last week of February that there was any significant reduction in flow at Knapp Mill.

Data



Graph 2 - A comparison of the total upstream fish count in February across each year (excluding 2013, 2014, 2016 and 2018).



Graph 3 - 2025 upstream fish count each day in February alongside the flow through Knapp Mill for the same period. This data combines both salmon and sea trout.

Gallery

Below is a collection of images taken from the counter cameras. Figure 2 offers a sense of scale for any images taken within the fish counters.



Figure 2 – Overhead view of the Turbine House (left) and Fish Pass (right). The distance between neighbouring electrodes, as indicated by each yellow line, is 45 cm.

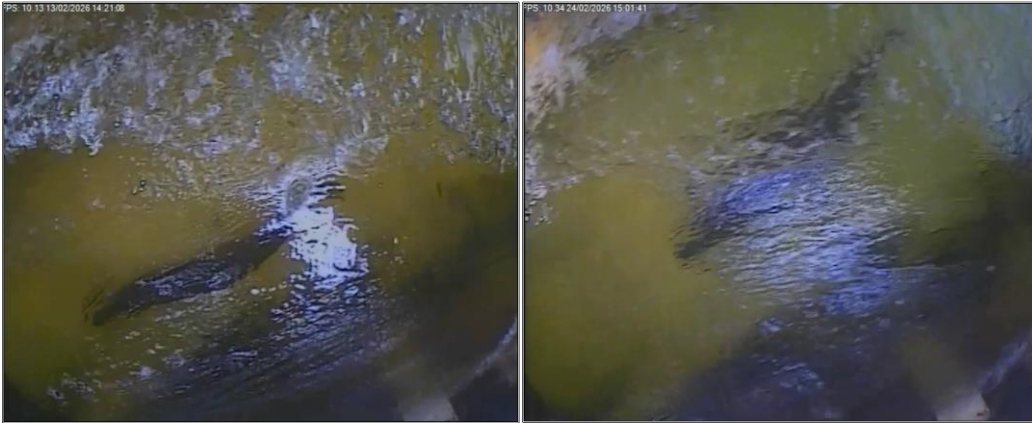


Figure 3 – A ~60 cm salmon (left) and ~65 cm salmon (right) heading up channel 20. 13/02/2026 (left) 24/02/2026 (right)



Figure 5 – A ~30 cm sea trout (left) moving up channel 20. The fish on the right made it halfway up the counter before turning around and heading back downstream. 25/02/26 (left) and 11/02/26 (right)



Figure 6 – A ~55 cm salmonid swimming up through the Turbine House rapids. The very high water levels created a waterfall over the frame of the fish pass entrance, adding to the turbulence and creating a challenge for the overhead camera. 12/02/26



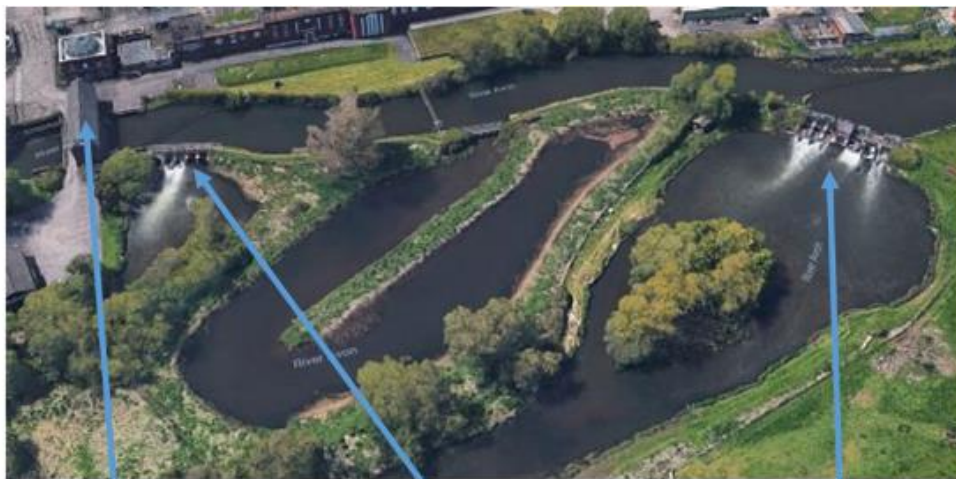
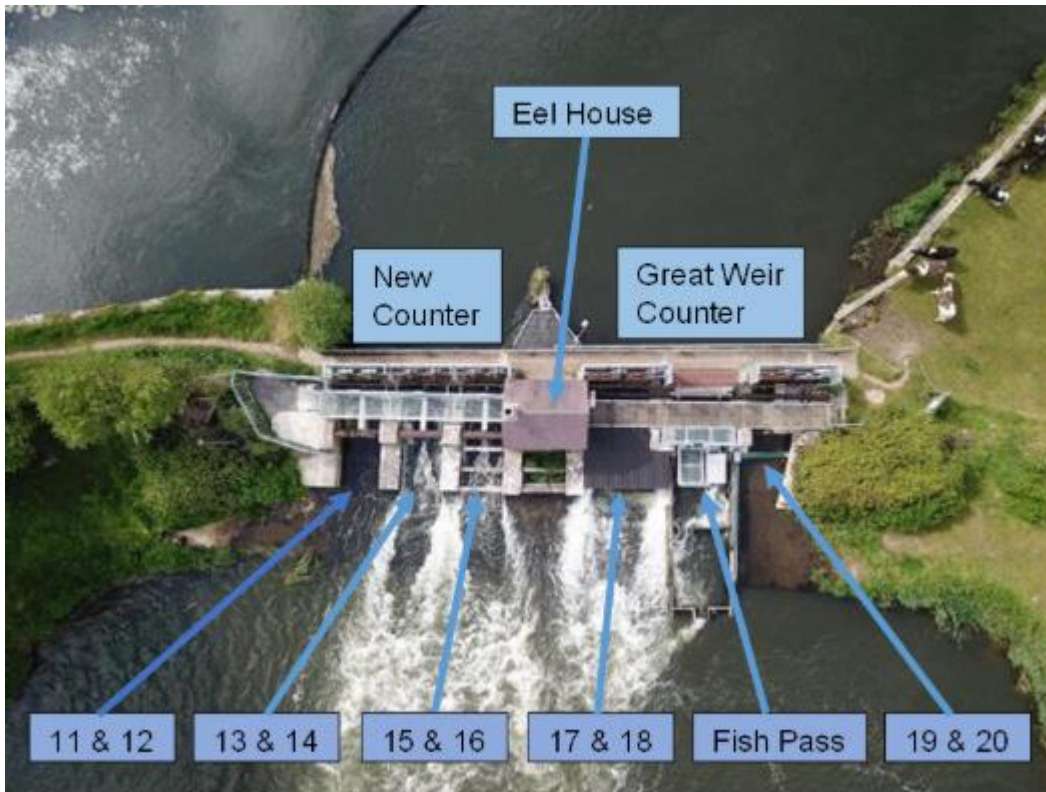
Figure 6 – A couple of particularly unsightly images from the first week of February at the Turbine House. A small tree and one large tree stump became wedged in the opening during the high flows, causing quite a bit of turbulence over the counter.



Figure 8 – At the tail end of January, much of the floodplain was underwater and remained so throughout February. 30/01/26

For further information

Contact: KnappMill@environment-agency.gov.uk



Route 1 – Turbine House
Open to fish movement throughout the year in all flow conditions.

Route 3 – Side Weir
This weir unfortunately has no fish counters and so an unrecorded number of fish may use it when the hatches open in high flows.

Route 2 – Great Weir
Majority of fish pass through this structure as it sits within the main channel. The fish pass is located here.